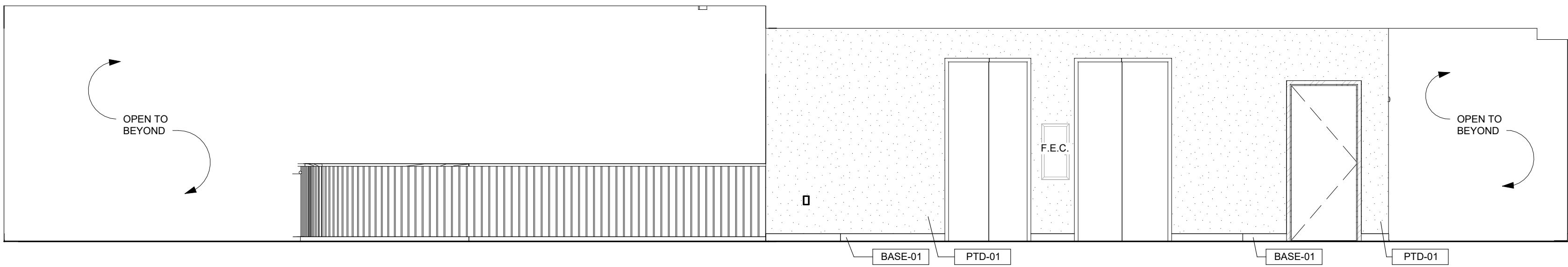
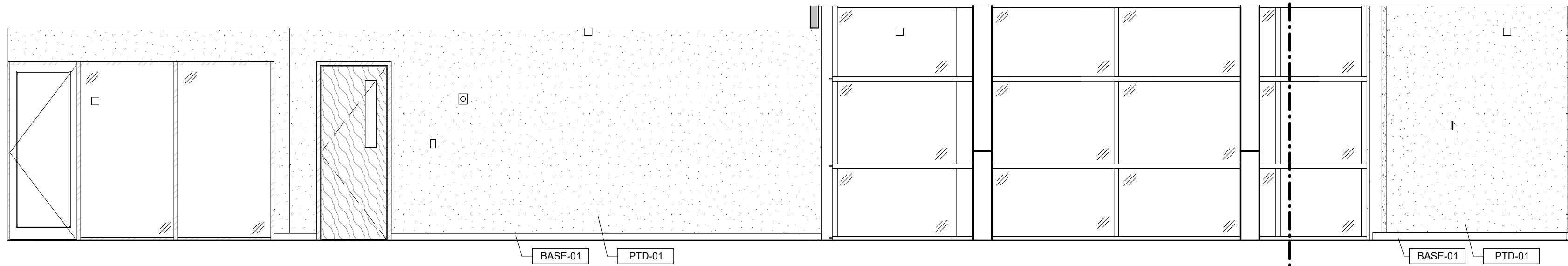


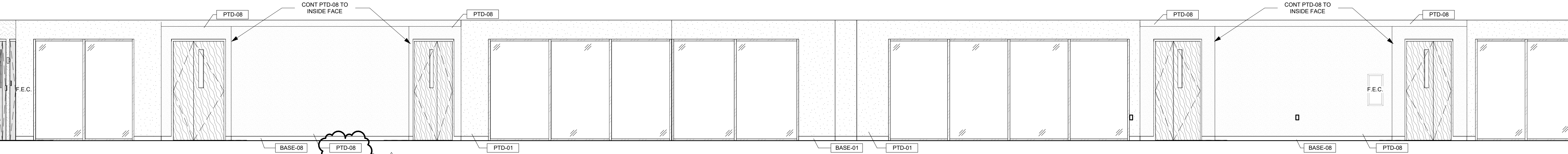
6 C307 CORRIDOR WEST  
1/4" = 1'-0" | RE:1/A103



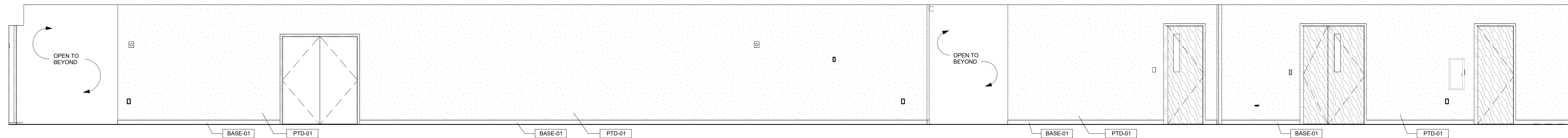
3 C304, C305 CORRIDORS NORTH  
1/4" = 1'-0" | RE:1/A103



4 C304, C305 CORRIDORS SOUTH  
1/4" = 1'-0" | RE:1/A103



2 C302, C303 CORRIDORS EAST  
1/4" = 1'-0" | RE:1/A103



1 C302, C303 CORRIDOR WEST  
1/4" = 1'-0" | RE:1/A103